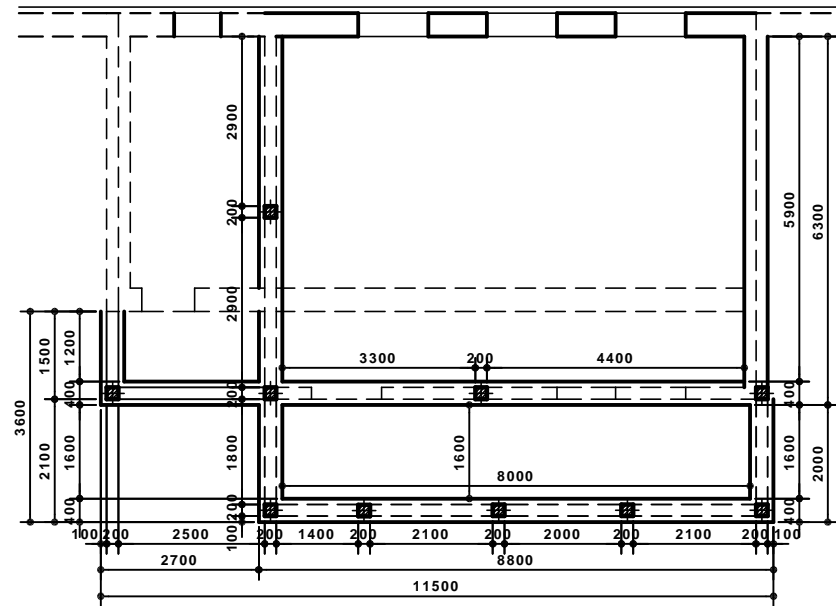
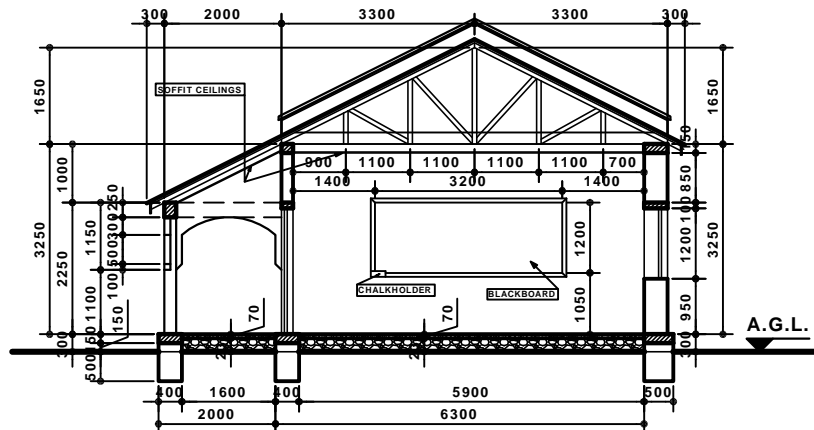


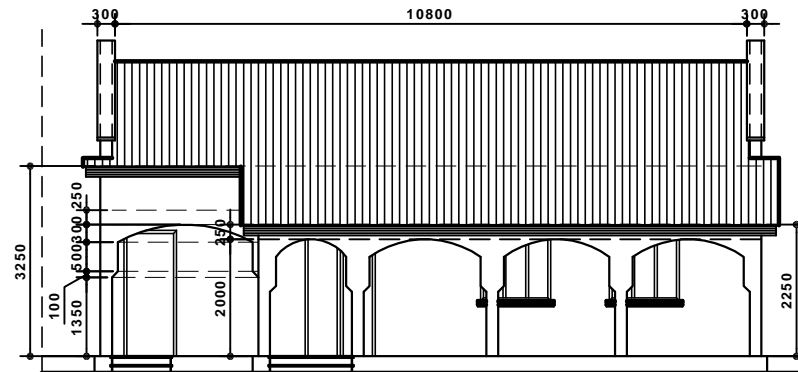
**MUBARAK P.S.: REHAB. STATE PLAN**  
**SCALE= 1:135**



**MUBARAK P.S.: FOUND. PLAN**  
**SCALE= 1:135**



**SECTION A-A / SCALE= 1:135**



**RIGHT SIDE VIEW: 1:135**

**N.B.: ALL MEASUREMENTS ARE IN MM.**



1	PROJECT	DESIGN OF THE REHAB. OF A SCHOOL BLOCK
2	LOCATION	DHAHAR TOWN / SANAG / PUNTLAND SOMALIA
3	FUNDED BY	SCI / GAROWE OFFICE / PUNTLAND SOMALIA
4	OWNER	MUBARAK PRIMARY SCHOOL / DHAHAR / SANAG
5	DRAWING	DISTRIBUTION LAYOUT PLAN / 1:135
6	DESIGNED BY	ENGINEER A/AZIZ OSMAN KITEH
7	DRAWN BY	IDEM / TEL. 0907740100
8	DATE	JUNE 9 / 2020

**REHABILITATION OF**  
**MUBARAK PRIMARY SCHOOL**  
**DHAHAR / SANAG / PUNTLAND**